



AirLink® MP70

Multi-Port LTE-A Pro Rugged Vehicle Router for Public Safety Fleets and Industrial IoT

Performance Series Routers



Benefits

- Proven solution: More than half of the Top 100 police departments rely on Sierra Wireless routers in cruisers and incident response vehicles
- Delivers reliable results in your real-world conditions
- Video, voice and data applications all work together - when and how you need them
- Work further and faster from the vehicle than ever before

MP70 Product Description

The AirLink® MP70 with a single LTE radio and dual-band Gigabit Wi-Fi, enables live video streaming and secure access to remote databases, and delivers connectivity for laptops, tablets, DVRs, and vehicle telemetry.

MP70 LTE-A PRO

Rugged Cat 12 LTE router capable of 600 Mbps downlink and 150 Mbps uplink speeds. FirstNet Ready. Wi-Fi optional.

MP70 LTE-A

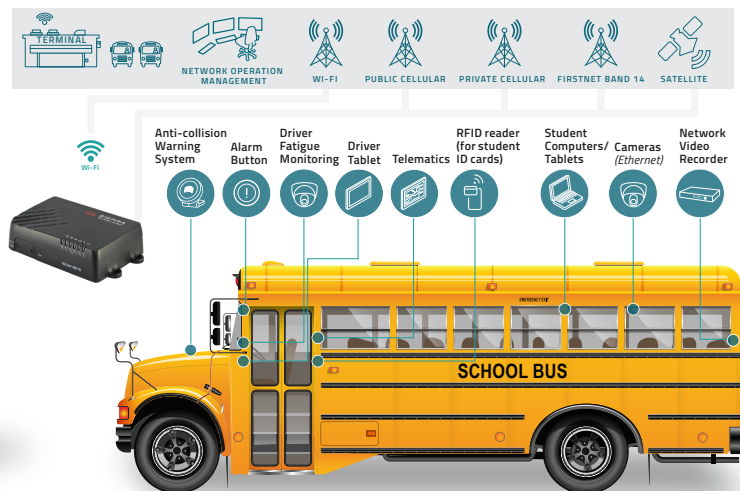
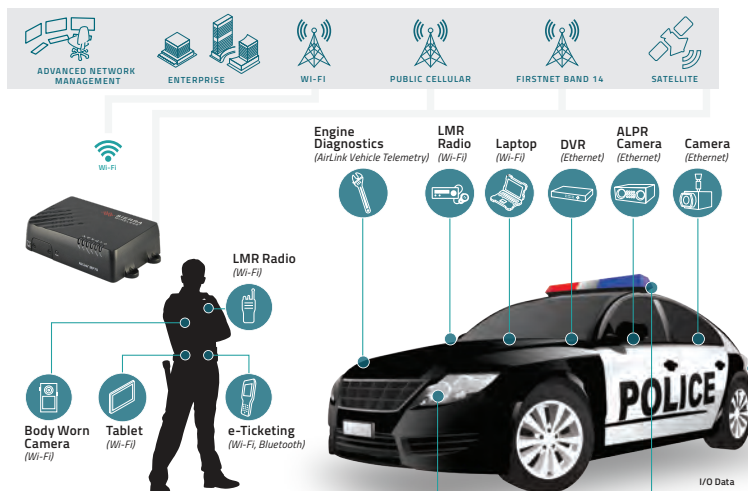
Rugged Cat 6 LTE router capable of 300 Mbps downlink and 50 Mbps uplink speeds. Wi-Fi optional.

Ideal Applications

Mobile mission critical applications in public safety and field services. Enables robust and secure Vehicle Area Networks (VANS) for:

- Police
- Fire
- Utility Vehicles
- Multi-ethernet industrial and IoT applications

MP70 APPLICATION EXAMPLES



POLICE

SCHOOL BUS

AIRLINK MP70 – PERFORMANCE SERIES ROUTER

Top Features	Device Variant	Specifications
LTE Supported	MP70 LTE-A Pro	Cat 12 LTE-A Pro (600/150 Mbps), FirstNet
	MP70 LTE-A	Cat 6 LTE (300/50 Mbps)
Navigation	All	GNSS with inertial dead reckoning and integrated vehicle telemetry.
Wi-Fi	All - Option	High-power, dual Band 2.4/5GHz 802.11ac Gigabit Wi-Fi (3 x 3 MIMO), 1.3 Gbps, up to 128 clients multiple SSIDs.
Interfaces	All	Gigabit Ethernet ports (4), RS-232, USB 2.0, Configurable I/O and analog inputs.
Security	All	All Sierra Wireless security features including secure boot and secure firmware update. IPsec, GRE, and OpenVPN client with up to 5 concurrent tunnels.
Construction	All	Aluminum die cast housing rated to IP-64 and Mil-STD 810G.
Industry Certifications	All	FirstNet Ready™ Safety: IECEE Certification and SAE J1455 (Shock & Vibration) Vehicle Usage: E-Mark and SAE J1455 (Shock & Vibration) Rail Usage: EN50155 (Rolling Stock) Class 1 Div 2 for hazardous use
Dimensions	All	190mm x 105mm x 45mm 7.5in x 4.1 in x 1.75 in

MP70 Services and Support

AirLink Complete: AirLink Complete is a subscription service that combines best-in-class device management software through AirLink Management Service (ALMS), industry-leading technical support and an extended warranty option. It delivers a cost-effective way to ensure your mission-critical infrastructure operates at peak efficiency. AirLink Complete is included free for 1 year with the purchase of a new MP70.

Device Management: AirLink Management Service (ALMS) is a secure cloud-based device management solution that supports over-the-air registration, configuration and software updates. ALMS Advanced Reporting and Analytics (ALMS ARA) adds advanced historical reporting and deeper insights to data.

Professional Services: Full product life-cycle services including solution consulting and solution implementation services delivered by Sierra Wireless Network Engineers and Program Manager.

About Sierra Wireless


Sierra Wireless (NASDAQ: SWIR) (TSX: SW) is the leading IoT solutions provider that combines devices, network and software to unlock value in the connected economy. Companies globally are adopting IoT to improve operational efficiency, create better customer experiences, improve their business models and create new revenue streams. Whether it's a solution to help a business securely connect edge devices to the cloud, or a software/API solution to help manage processes associated with billions of connected assets, or a platform to extract real-time data to make the best business decisions, Sierra Wireless will work with you to create the right industry-specific solution for your next IoT endeavor. Sierra Wireless has more than 1,300 employees globally and operates R&D centers in North America, Europe and Asia.

Connect with Sierra Wireless on the IoT Blog at www.sierrawireless.com/iot-blog, on Twitter at @SierraWireless, on LinkedIn at www.linkedin.com/company/sierra-wireless and on YouTube at www.youtube.com/SierraWireless



AirLink® MP70



	North America & EMEA	Asia Pacific	North America	Global
	LTE-A		LTE-A Pro	
LTE CATEGORY	Cat 6		Cat 12	
Peak D/L (Mbps)	300		600	
Peak U/L (Mbps)	50		150	
4G LTE Frequency Bands	2100(B1), 1900(B2), 1800(B3), AWS(B4), 850(B5), 2600(B7), 900(B8), 700(B12), 700(B13), 800(B20), 1900(B25), 850(B26), 700(B29), TDD B41	2100(B1), 1800(B3), 850(B5), 2600(B7), 900(B8), 850(B18), 850(B19), 1500(B21), 700(B28), TDD 38, TDD 39, TDD 40, TDD 41	2100(B1), 1900(B2), 1800(B3), AWS(B4), 850(B5), 2600(B7), 900(B8), 1800(B9), 700(B12), 700(B13), 700(B14), 850(B18), 850(B19), 800(B20), 850(B26), 700(B29), 2300(B30), 1500(B32), TDD B41, TDD B42*, TDD B43*, TDD B46*, CBRS B48*, 1700(B66) *Future Variant	2100(B1), 1900(B2), 1800(B3), AWS(B4), 850(B5), 2600(B7), 900(B8), 1800(B9), 700(B12), 700(B13), 850(B18), 850(B19), 800(B20), 850(B26), 700(B28), 700(B29), 2300(B30), 1500(B32), TDD B41, TDD B42*, TDD B43*, TDD B46*, CBRS B48*, , 1700(B66) * Future Variant
Public Safety Bands	N/A	N/A	Band 14 (United States) 	Band 26, 28
3G WCDMA/HSPA+ Frequency Bands	2100(B1), 1900(B2), 1800(B3), AWS(B4), 850(B5), 900(B8)	2100(B1), 850(B5), 800(B6), 900(B8), 1700(B9), 850(B19) TD-SCDMA: B39	2100(B1), 1900(B2), AWS(B4), 850(B5), 800(B6), 900(B8), 1700(B9), 850(B19)	2100(B1), 1900(B2), AWS(B4), 850(B5), 800(B6), 900(B8), 1700(B9), 850(B19)
APPROVALS Regulatory	FCC, IC, PTCRB, R&TTE, GCF, CE	RCM, JRF/JPA	FCC, IC, PTCRB, GCF	CE, RED, RCM
Carrier	Verizon, AT&T, Sprint, Rogers, Telus, Bell, SouthernLinc	Telstra	Verizon, AT&T	
PART NUMBERS	1102709 1102743 (Wi-Fi)	1102713 1102745 (Wi-Fi)	1104071 1104073 (Wi-Fi)	1104072 1104074 (Wi-Fi)

TECHNICAL SPECIFICATIONS

	Specification
HOST INTERFACES	4 Gigabit RJ-45 Ethernet ports RS-232 serial port (DB-9) USB 2.0 Micro-B Connector 3 SMA antenna connectors (cellular, diversity, GNSS) Active GNSS antenna support
SECURITY	Remote Authentication (LDAP, RADIUS, TACACS+) DMZ Inbound and Outbound Port filtering Inbound and Outbound Trusted IP MAC Address Filtering PCI compatible Secure Firmware Update FIPS 140-2
WI-FI (Optional)	Dual Band 2.4/5GHz Wi-Fi 802.11 b/g/n/ac with support for 128 clients WPA2 Enterprise High output power 21 dBm (per chan) Simultaneous AP/Client Mode WiFi as WAN Mode (Multiple SSIDs, Captive Portal)
INPUT/OUTPUT	Configurable I/O (5 pins total) <ul style="list-style-type: none"> 5 Digital Inputs: ON Voltage: 2.7 to 36 VDC 1 Digital Open Collector Output > sinking 500 mA 3 Analog Inputs: 0.5-36 VDC Configurable Pull-ups for dry contact input
LAN (ETHERNET/USB)	DHCP Server IP Passthrough VLAN Host Interface Watchdog PPPoE

	Specification
SERIAL	TCP/UDP PAD Mode Modbus (ASCII, RTU, Variable) PPP DNP3 Interoperability
ENVIRONMENTAL	Operating Temperature: -30°C to +70°C / -22°F to +158°F Storage Temperature: -40°C to +85°C / -40°F to +185°F Humidity: 95% RH @ 60°C Military Spec MIL-STD-810G conformance to shock, vibration, thermal shock, and humidity IP64 rated ingress protection
POWER	Input Voltage: 7 to 36 VDC Low voltage disconnect to prevent battery drain Built-in protection against voltage transients including 5 VDC engine cranking and +200 VDC load dump Ignition Sense with time delay shutdown
NETWORK AND ROUTING	Network Address Translation (NAT) Ethernet WAN Port Forwarding Verizon PNTM NEMO/DMNR IPv6 Gateway VRRP Policy Routing Reliable Static Route Dynamic DNS
VPN	IPsec, GRE, and OpenVPN Client Up to 5 concurrent tunnels Split Tunnel Dead Peer Detection (DPD)
DIMENSIONS	190mm x 45mm x 105mm (112mm including connectors) 7.5in x 1.75in x 4.1in (4.4in including connectors) Weight: 0.76kg / 1.68 lb

*For carrier specific band support please refer to the hardware user guide.

	Specification
SATELLITE NAVIGATION (GNSS)	Dedicated GNSS Receiver supporting GPS, GLONASS, BeiDou, Galileo Tracking Sensitivity: -162 dBm Reports: NMEA 0183 V3.0, TAIP, RAP, XORA Multiple Redundant Servers Reliable Store and Forward Inertial Navigation Sensors (Accelerometer and Gyro)
NETWORK MANAGEMENT	Secure mobile network & asset management application available in the cloud or licensed platform in the enterprise data center Fleet wide firmware upgrade delivery Router configuration and template management Router staging over the air and local Ethernet connection Over-the-air software and radio module firmware updates Device Configuration Templates Configurable monitoring and alerting Remote provisioning and airtime activation (where applicable)
EVENTS ENGINE	Custom event triggers and reports Configurable interface, no programming Event Types: Digital Input, Network Parameters, Data Usage, Timer, Power, Device Temperature and Voltage Report Types: RAP, SMS, Email, SNMP Trap, TCP (Binary, XML, CSV) Event Actions: Drive Relay Output
ROUTER MANAGEMENT INTERFACES	Local web user interface AT Command Line Interface (Telnet/SSH/Serial) SNMP SMS Commands

	Specification
APPLICATION FRAMEWORK	ALEOS Application Framework (AAF) LUA Scripting Language
INDUSTRY CERTIFICATIONS	Safety: IECCE Certification Bodies Scheme (CB Scheme), UL 60950 Vehicle Usage: E-Mark (UN ECE Regulation 10.04), ISO 7637-2, SAE J1455 (Shock, Vibration, Electrical) Environmental: RoHS2, REACH, WEEE Rail Usage: EN50155 (Rolling Stock)
SUPPORT AND WARRANTY	Includes 1st Year AirLink Complete: <ul style="list-style-type: none"> AirLink Management Service (ALMS) Direct 24/7 Technical Support 3-year standard warranty; optional 2-year warranty extension 1-day Accelerated Hardware Replacement available through participating resellers
ACCESSORIES	In the box: DC Power Cable and Quick Start Guide AC Adapter (2000579) I/O Cable (6001004) OBD-II Y Cable (6001204) J1939 Y Cable (6001192) 6-in-1 Shark Fin (6001197) 6-in-1 Dome Antenna (6001121) See website for more antenna options.

Related AirLink Products

AIRLINK DEVICE MANAGEMENT SOLUTIONS

AirLink Management Service (ALMS)



- Secure, Cloud-based network and asset management
- Remotely deploy, configure, monitor and manage AirLink devices
- Carrier-grade, high availability, secure, global infrastructure

AIRLINK VPN APPLIANCE

AirLink Connection Manager



- VPN appliance built from the ground up for AirLink routers & gateways
- Simplify deployment and management of your VPN solution, extending the enterprise to the network edge for fixed and mobile endpoints
- Carrier agnostic – ACM doesn't require fixed and/or public IP
- Compatible with FIPS 140-2, and always-on VPN capability

AIRLINK ANTENNA SOLUTIONS

AirLink Antennas



- Tested and certified to provide guaranteed performance with all AirLink routers and gateways
- Accelerate deployment with always-on, end-to-end connectivity

About Sierra Wireless

Sierra Wireless (NASDAQ: SWIR) (TSX: SW) is the leading IoT solutions provider that combines devices, network and software to unlock value in the connected economy. Companies globally are adopting IoT to improve operational efficiency, create better customer experiences, improve their business models and create new revenue streams. Whether it's a solution to help a business securely connect edge devices to the cloud, or a software/API solution to help manage processes associated with billions of connected assets, or a platform to extract real-time data to make the best business decisions, Sierra Wireless will work with you to create the right industry-specific solution for your next IoT endeavor. Sierra Wireless has more than 1,300 employees globally and operates R&D centers in North America, Europe and Asia.

For more information, visit www.sierrawireless.com.